

POWER GROMMET | BAR OPTIONS



POWER GROMMET WITH USB

	W	D	H
100-GRP-USB	2.75	2.75	2

- 1 POWER
- 1 USB PORT. USB CHARGING @ 2.1AMPS OR DATA TRANSFER
- 5' POWER CORD, UL CERTIFIED
- 2.36"/60MM HOLE SIZE
- LIST PRICE INCLUDES CUSTOM CUTOUT FOR GROMMET INSTALL.

AVAILABLE FINISH: BLACK (BL)



ANGLED DESKTOP POWER GROMMET

	W	D	H
100-DTP2-USB	6.25	3.75	3.75

- USB CHARGER: 5V DC 3.1A (15.5 WATTS), 1.5A PER PORT (7.5 WATTS) RATING: 125V 60HZ 15A
- CHARGING ONLY. 10' 14 AWG X 3C POWER CORD.
- CUL CERTIFIED FOR USE IN CANADA. CAN CLAMP THROUGH OUR RECTANGLE GROMMET (CLAMP WIDTH: 60MM)
- 2 - US POWER, 2 - 3.1A USB CHARGING
- 6' POWER CORD

AVAILABLE FINISHES: BLACK (BL) & WHITE (WH)



FLUSH FLIP TOP POWER GROMMET

	W	D	H
100-FTP-USB	4.3	4.3	2

- 3 POWER, 1 ETHERNET CAT5E (RJ45) PORT AND 2 USB PORTS. USB PORTS CAN BE USED AS DATA TRANSFER OR CHARGING @ 2.1AMPS

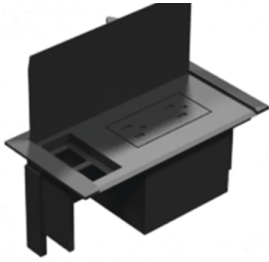
FLUSH FLIP TOP POWER GROMMET



	W	D	H
100-FTP-DATA	4.3	4.3	2

- 3 POWER, 2 ETHERNET CAT5E (RJ45) PORTS
- STREAMLINE PROFILE WITH HIDDEN RECEPTACLES WHEN IN FLIPPED POSITION
- 10' POWER CORD, UL CERTIFIED.

AVAILABLE FINISHES: BLACK (BL)



POWER GROMMET

FOR CONFERENCE OR WORK SURFACE TOPS. INCLUDES 2 POWER OUTLETS & 6 FT. POWER CORD, 2 OPENINGS FOR ETHERNET OR PHONE COUPLERS (SEE BELOW), DROP DOWN CORD COVER AND COST OF WORKSURFACE CUT OUT FOR INSERTION

	W	D	H
100-PWRGROM	6.5	3.5	2.75

AVAILABLE FINISHES: BLACK (BL)

COUPLERS

ETHERNET (RJ45) COUPLER FOR 100-PWRGROM

100-DATACP

PHONE (RJ11) COUPLER FOR 100-PWRGROM

100-PHONECP

UL CERTIFIED



POWER GROMMET

	W	D	H
100-RECP-01	8.75	5	4.25

- 2 POWER
- 4 USB PORTS. 2 CHARGING ONLY PORTS @ 2.1AMPS AND 2 DATA TRANSFER PORTS
- 1 USB 2.0 PORT
- 1 ETHERNET CAT6 (RJ45) PORT
- 1 PHONE (RJ11) PORT
- UL CERTIFIED
- LIST PRICE INCLUDES CUSTOM CUTOUT FOR GROMMET INSTALL.
- 10' POWER CORD

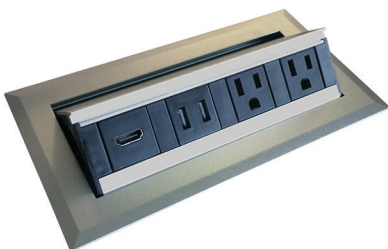
AVAILABLE FINISH: BLACK (BL)



	W	D	H
100-RECP-02	8.25	4.25	2.25

- 2 POWER
- 2 USB CHARGING ONLY PORTS @ 2.1AMPS
- 1 ETHERNET CAT6 (RJ45) PORT
- 10' POWER CORD, UL CERTIFIED
- LIST PRICE INCLUDES CUSTOM CUTOUT FOR GROMMET INSTALL.

AVAILABLE FINISH: ALUMINIUM HOUSING (PREMIUM FINISH)



	W	D	H
100-RECP-03	8.25	4.25	2.25

- 2 POWER
- 2 USB CHARGING ONLY PORTS @ 2.1AMPS
- 1 HDMI PORT
- 10' POWER CORD, UL CERTIFIED
- LIST PRICE INCLUDES CUSTOM CUTOUT FOR GROMMET INSTALL.

AVAILABLE FINISH: ALUMINIUM HOUSING (PREMIUM FINISH)

100-RECP-04

8.25 4.25 2.25



- 2 POWER
- 1 - DATA PORT: ETHERNET CAT6 (RJ45) PORT
- 1 HDMI PORT
- 10' POWER CORD, UL CERTIFIED
- LIST PRICE INCLUDES CUSTOM CUTOUT FOR GROMMET INSTALL.

AVAILABLE FINISH: ALUMINIUM HOUSING (PREMIUM FINISH)

100-RECP-CUSTOM

100-RECP-CUSTOM CAN BE CUSTOMIZED TO SUIT SPECIFIC CONFIGURATION NEEDS. PLEASE CONTACT CUSTOMER SERVICE FOR MORE INFORMATION AND PRICING.

- CUSTOM POWER GROMMETS EXTENDED LEAD TIMES. APPLY APPROX 4-6 WEEK LEAD TIME.

SOME OF THE CUSTOMIZATION OPTIONS AVAILABLE ARE AS FOLLOWS:

ADAPTER OPTIONS:

- POWER RECEPTACLES
- 2 USB CHARGING ONLY PORTS @ 2.1AMPS
- ETHERNET (RJ45) PORT
- PHONE (RJ11) PORT
- HDMI PORT
- VGA PORT
- OPTION TO INCLUDE A SURGE PRO-TECTOR

FINISH OPTIONS:

- ANODIZED ALUMINUM
- BLACK
- WHITE
- BRONZE

POWER BAR WITH USB

W D H

100-PB6-USB

15.75 2.25 1.25



- USB CHARGER - 2- 2.1AMP PORTS - 5VDC - 2.1A PER PORT. USB CHARGING ONLY.
- 6 - AC 120V GROUND PLUGS
- 10' POWER CORD WITH 90° PLUG
- CUL CERTIFIED FOR USE IN CANADA

AVAILABLE FINISH: BLACK (BL)